

Driver Installation Instructions

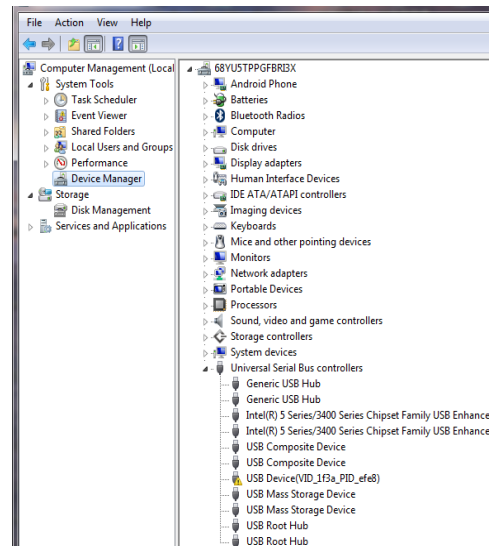
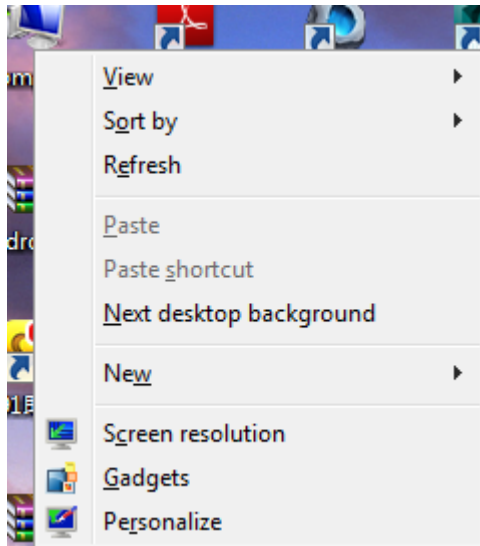
The driver has "offline Driver Installation" and "Online Driver Installation" two kinds of ways, If you can not access your personal PC Ethernet, you can choose to manually "offline Driver Installation" mode, If your personal PC can access the Ethernet, you can select the "off-line drive to install" or "Online Driver Installation" mode.

OK, we first introduce the "offline drive installed" Tutorial:

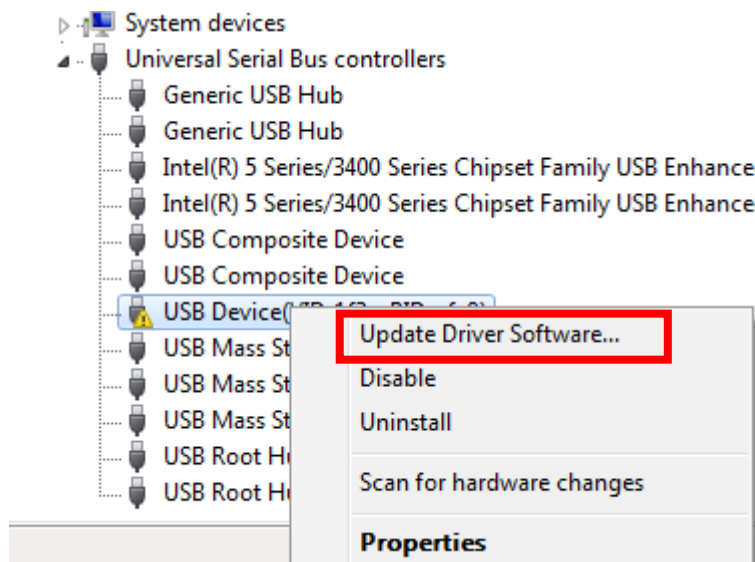
1/ Please connect the computer via a USB

2/Click on Properties Enter Device Manager

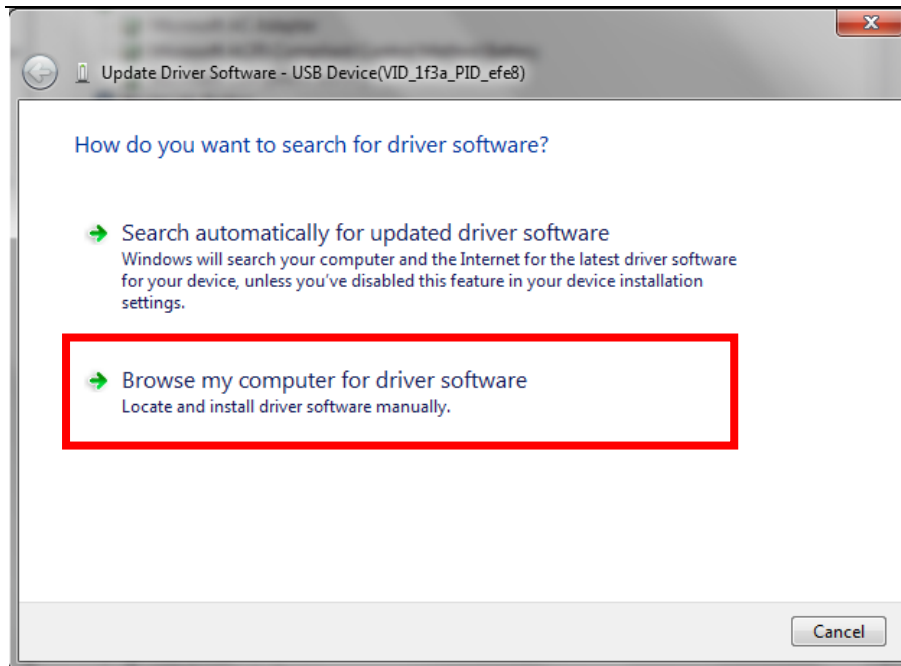
cable and HT380. Right-click on My Computer



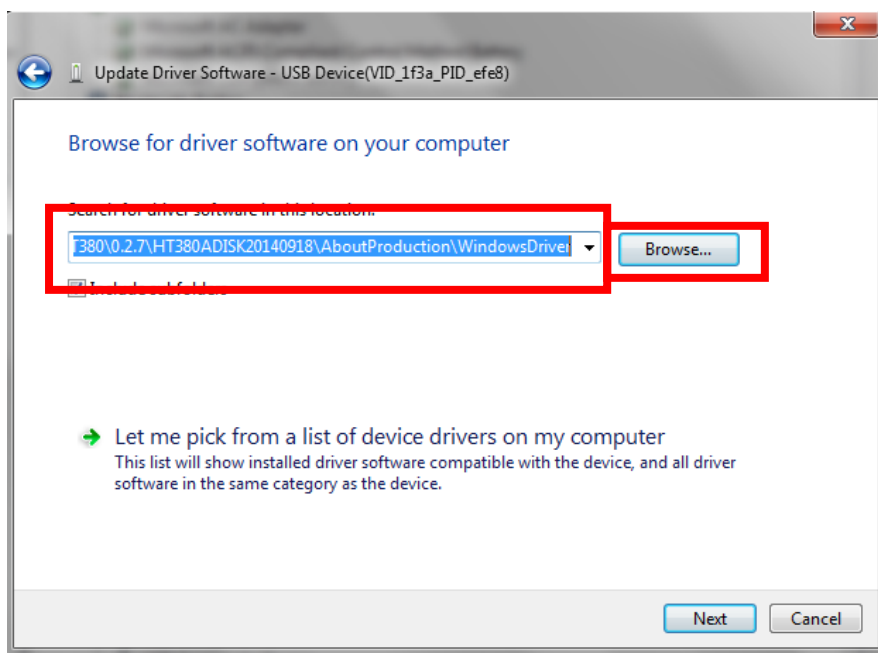
3/ Click the yellow dot icon Select Update Driver



4/ Select Browse my computer for driver software



5/ Click Browse, select the CD-ROM in the usb_driver folder, click Next to begin the installation



6/Installation is complete

"Online Driver Installation" of using the tutorial:

Installation

1、 Double click

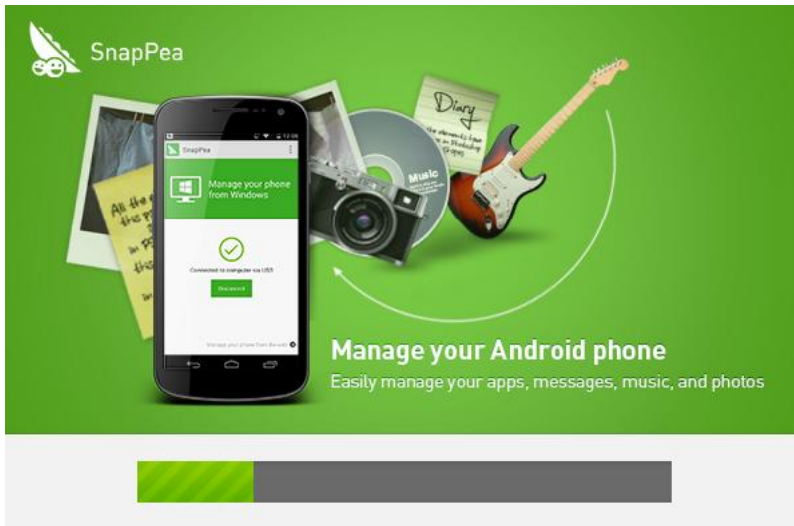


SnapPea-snappea.exe

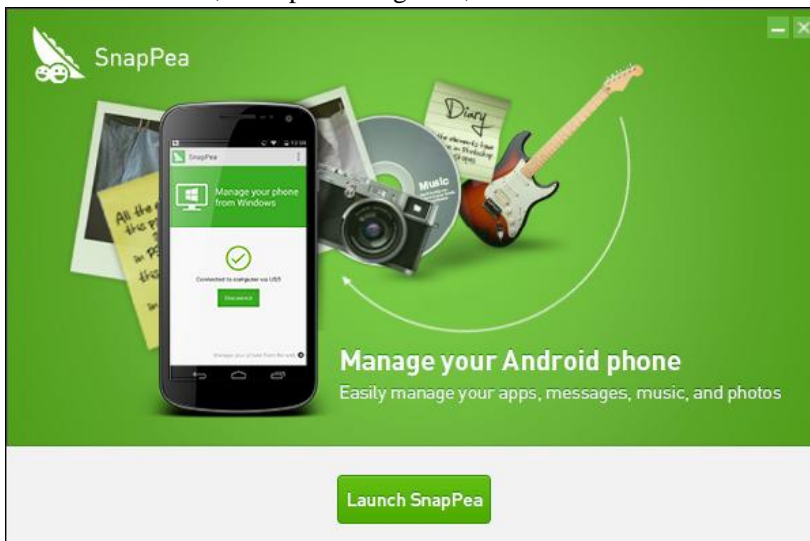
2、 Prompt a dialog box ,select Install.



3、 Prompt a box which display that the program is installing.



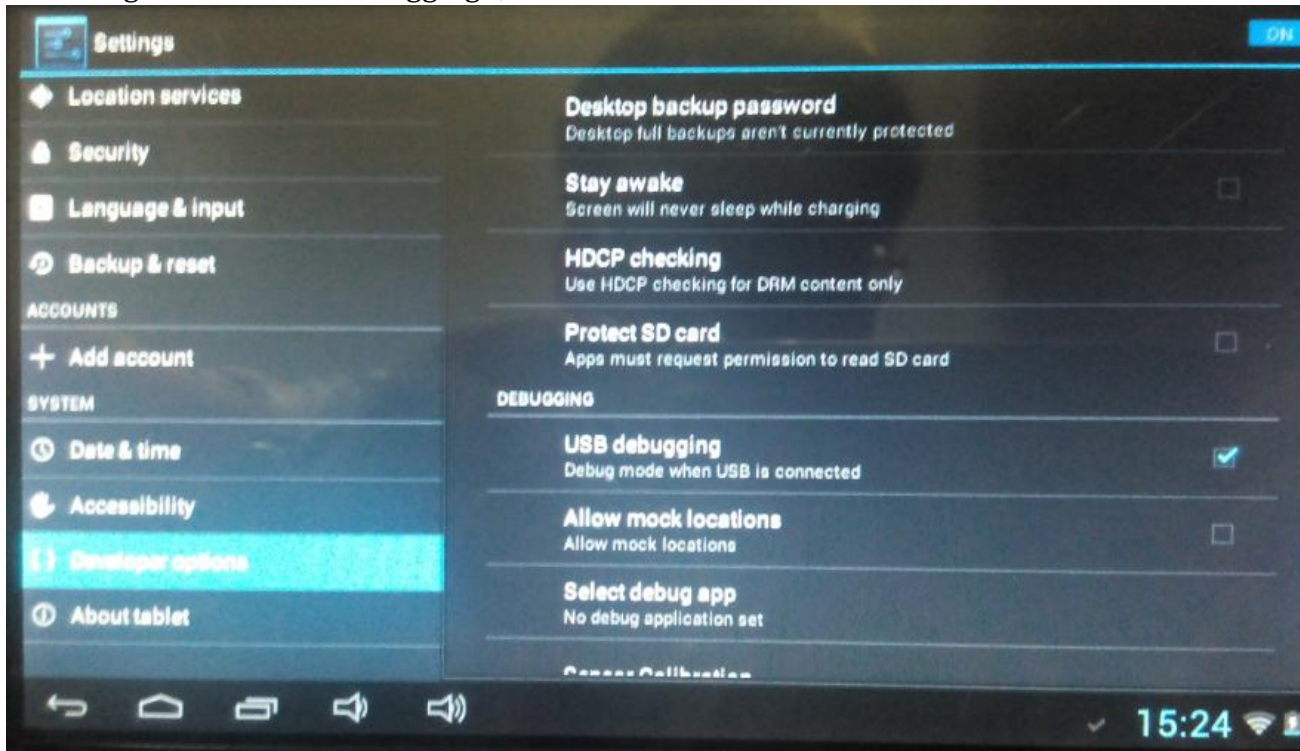
4、 Once installed, Prompt a dialog box ,select Finish.



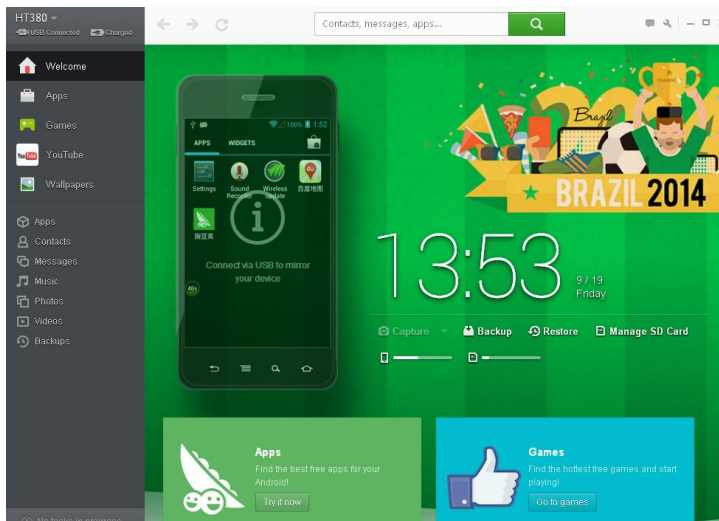
Data transmission

- 1、 Connect Product to computer through the OTG interface.
- 2、 Select Setting — {}Developer options,click 【USB debugging】 on the right box;

selecting the item "USB debugging" ,



3、 Open SnapPea, and Product will connect to the computer automatically.



4、 We can install ,uninstall and export the apps ,we can also move them to SD card.